



Offers Over £250,000

KEY TENURE:

Freehold

EPC RATING: TBC

COUNCIL TAX BAND: B

## Pelsall Walsall

Shireview Road Pelsall  
Walsall West Midlands

 **5**  **2**  **2**

***Time is of the essence! Don't hang around... As this outstanding a superbly appointed, deceptively spacious FIVE BEDROOM home will surely be your first choice to view!***

Being improved throughout with a stylish breakfast kitchen, living room with feature wood burner, ground floor shower room, in addition to the overall internal presentation gains there is a lovely landscaped rear garden. Also an entrance porch, inviting hallway, three good size bedrooms and a refitted family bathroom to the first floor and two further bedrooms, one of which has a stunning view, and a loft storage room to the second floor. Set in an ever popular and sought after location with an abundance of local amenities this delightful village has on offer, bus routes, great commuting links, highly regarded schooling and yet being on the door step of beautiful commons and canal walks.

- Deceptively Spacious Three Storey
- Well Presented & Ideal Family Purchase
- Five Bedrooms, Bathroom & Shower Room
- Generous L-Shaped Kitchen
- Spacious Living Room
- Great Rear Garden & Stunning Rear View

You can reach us **9am to 9pm**, 7 days a week

4 Crown Bridge, Penkridge, Staffordshire, ST19 5AA

**01785 715555**

hellopenkridge@dourishandday.co.uk





## Entrance Porch

Having double glazed windows & accessed through double glazed French doors to the front elevation, with tiled flooring, and further double glazed door opening into an inviting entrance hallway.

## Entrance Hallway

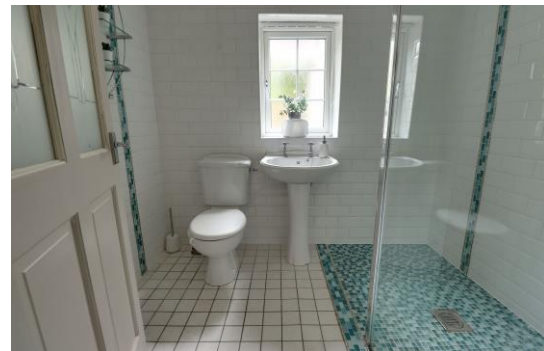
Having stairs off, rising to the first floor landing & accommodation with a useful understairs storage cupboard, radiator, tiled flooring, and internal doors off, providing access to;

## Living Room 12' 9" x 11' 4" (3.88m x 3.46m)

A beautifully presented living room, featuring a double sided wood burning stove. In addition, there is wood effect flooring, a double glazed walk-in bay window to the front elevation, radiator, and internal glazed bi-folding doors providing large open-plan access to the adjoining kitchen.

## Kitchen & Dining Space 21' 5" x 10' 9" (6.53m x 3.28m)

A further beautifully presented room which features an inset double sided log burning stove with timber mantel over in the dining area, having double glazed sliding patio doors providing views and access out to the garden. The kitchen features a contemporary styled range of modern wall, base & drawer units with fitted work surfaces over, and incorporating an inset sink unit with space & plumbing available for kitchen appliances. There is tiled flooring throughout, inset ceiling downlighting, radiator, a double glazed window & double glazed door to the rear elevation, and further internal door providing access to a ground floor shower room.



You can reach us **9am to 9pm**, 7 days a week

4 Crown Bridge, Penkridge, Staffordshire, ST19 5AA

**01785 715555**

[hellopenkridge@dourishandday.co.uk](mailto:hellopenkridge@dourishandday.co.uk)

## **Shower Room (Ground Floor)** 7' 5" x 5' 9" (2.25m x 1.74m)

Fitted with a walk-in shower cubicle, a pedestal wash hand basin with chrome mixer tap, and a low-level WC. There is also tiled walls, tiled flooring, a radiator, and a double glazed window to the rear elevation.

## **First Floor Landing**

Having a built-in storage cupboard, and internal doors off, providing access to;

## **Bedroom Two** 12' 3" x 11' 2" (3.74m x 3.41m)

A double bedroom, having a double glazed window to the front elevation & radiator.

## **Bedroom Three** 9' 7" x 8' 6" (2.91m x 2.58m)

Having wood effect flooring, a storage cupboard & double glazed window to the rear elevation.

## **Bathroom**

Featuring a modern refitted kitchen having a Jacuzzi style bath tub with Victorian telephone style mixer taps & hand-held shower attachment with screen, a pedestal wash hand basin with matching chrome taps, and a low-level WC with enclosed cistern. There is part-tiled walls, tiled effect flooring, a radiator, and two double glazed windows to rear elevation.

## **Bedroom Four** 8' 5" x 8' 0" (2.57m x 2.43m)

Having a double glazed window to the front elevation, loft access hatch & built-in wardrobes.

## **Second Floor Landing**

A galleried landing having a double glazed window to the rear elevation & internal door to;

## **Bedroom One** 15' 9" x 7' 11" (4.79m x 2.41m)

A spacious double bedroom which features inset ceiling downlighting, and having a radiator, a double glazed window to the rear elevation enjoying superb views

## **Bedroom Five** 7' 7" x 5' 5" (2.30m x 1.65m)

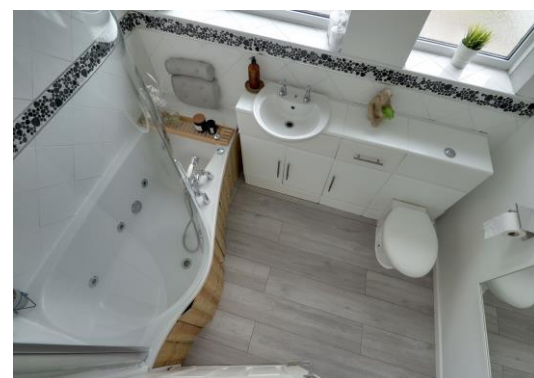
Having a double glazed window to the rear elevation.

## **Outside Front**

The property sits behind a low-maintenance concrete printed driveway with established flowerbeds, plants & shrubs.

## **Outside Rear**

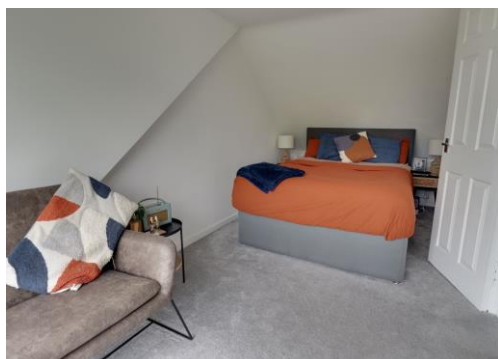
An enclosed rear garden featuring a seating area with Pergola over providing covered outdoor seating/entertaining, extending to a further low-maintenance area of the garden being laid to artificial turf with decorative slate covered areas, a variety of established flowerbeds, plants & shrubs, and a further raised timber decked patio seating area, and the garden is enclosed by timber panelled fencing.





Floor Plan Awaited

Energy Efficiency Rating		Current	Potential
Very energy efficient - lower running costs			
(92-100)	A		
(81-91)	B		
(69-80)	C		
(55-68)	D		
(39-54)	E		
(21-38)	F		
(1-20)	G		
Not energy efficient - higher running costs			
England, Scotland & Wales			



**IMPORTANT NOTICE** Dourish & Day for themselves and for the vendor or lessors of this property whose agents they are given notice that: (i) the particulars are set out as a general outline only for the guidance of intending purchasers or lessees, and do not constitute, nor constitute part of, an offer of contract, (ii) all descriptions, dimensions, references to condition and necessary permissions for use and occupation, and other details are given in good faith and are believed to be correct but any intending purchasers or tenants should not rely on them as statement or representation of fact but must satisfy themselves by inspection or otherwise as to the correctness of each of them, (iii) no person in the employment of Dourish & Day has any authority to make or give any representation or warranty whatever in relation to this property.

You can reach us **9am to 9pm**, 7 days a week

4 Crown Bridge, Penkridge, Staffordshire, ST19 5AA

**01785 715555**

[hellopenkridge@dourishandday.co.uk](mailto:hellopenkridge@dourishandday.co.uk)